

A modern glass elevator is the central focus, situated on a rooftop terrace. The elevator's glass panels reflect the sunset sky and the city skyline in the background. The sky is filled with soft, golden clouds, and the city lights are visible in the distance. The overall scene is serene and modern.

LIBERTY ELEVATOR CORPORATION

Elevators That Move You





ELEVATORS THAT MOVE YOU

Why settle for the ordinary when you can reach for the extraordinary and deliver an elevator experience that positively impacts your business and your guests.

Liberty Elevator has earned its reputation as a trusted & reliable partner by delivering superior craftsmanship and a commitment to excellence since 1960. Liberty's award-winning team has been recognized as the **Best Family-Owned Business** in the elevator industry as well as a Three-time **Project Of The Year** award winner for custom installations, including the elevators in the Statue of Liberty.

Now into its third generation, Liberty continues to deliver next level service and exceed the customer expectation of what an elevator experience can be.



The Liberty Legacy Established 1960

1960 – George Muttart begins National Elevator Co. in his Rutherford NJ basement, servicing NJ, NY & CT.

1986 – Liberty Elevator Corporation is born during the centennial renovations of the Statue of Liberty.

2014 – Awarded “*Elevator Project of the Year*” for elevator installation, Life & Safety upgrades at the Statue of Liberty.

2018 – Liberty Elevator is Voted the **#1 Family-Owned-Business** in the Elevator Industry by customers & peers.

2020 – Awarded “*Elevator Project of the Year*” for the custom elevator installation at the Vessel, Hudson Yards.

2021 – Liberty Elevator extends its service reach to South Florida & is again voted **#1 Family-Owned-Business** in the Elevator Industry.

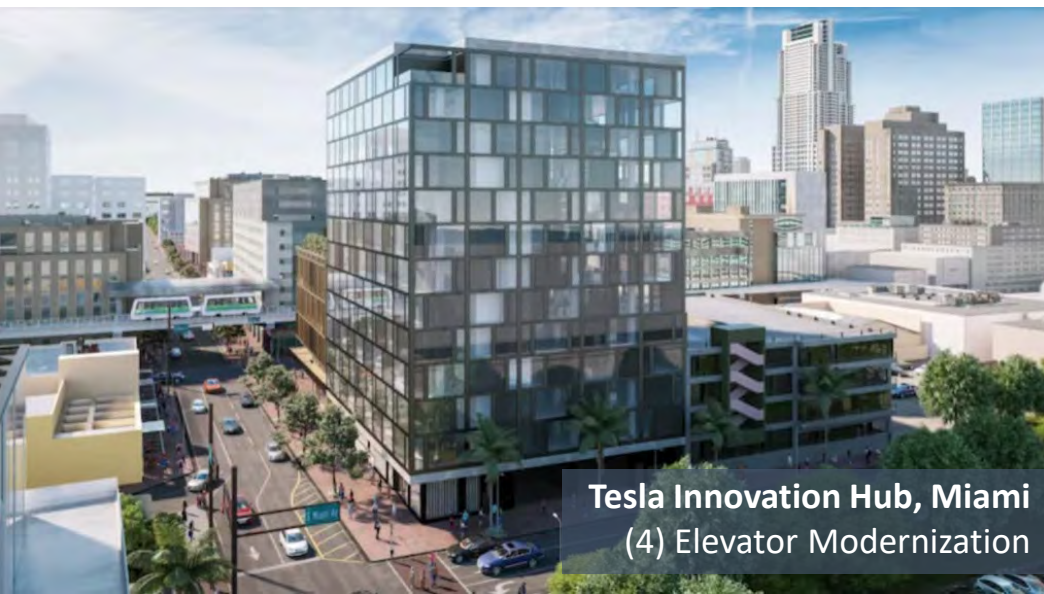




Hackensack Medical, NJ
Mod (61) Maintain (61) Elevators



Liberty Island Museum, NY
Custom Elevator Installation



Tesla Innovation Hub, Miami
(4) Elevator Modernization

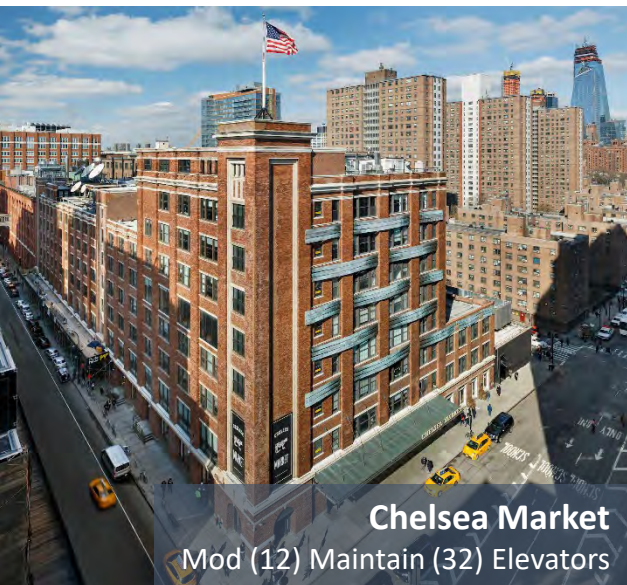
Elevating Our Local Communities

Liberty Elevator fills the service gap between cumbersome large corporate OEM's and ill-equipped, non-union service providers. As one of the larger Independent elevator contractors, Liberty Elevator Corporation is robust enough to mobilize assets for any size project, yet agile enough to address individual client needs while offering customized agreements & *"the freedom to choose"*.

As a **Family-Owned-Business**, ownership is directly involved in the day-to-day operations of Liberty Elevator, providing leadership & a heightened level of responsiveness that directly reflects the company's core family values.



Regeneron Pharmaceutical
Mod (17) Maintain (34) Elevator



Chelsea Market
Mod (12) Maintain (32) Elevators



Johnson & Johnson
Mod (21) Maintain (93) Elevators



95 Christopher Columbus
Mod (11) Maintain (15) Elevators

Professional Union Mechanics

At Liberty Elevator we strongly believe that our work ethic and tireless commitment to the customer experience is our strategic advantage.

This fundamental approach, in partnership with reliable Union certified mechanics, has allowed Liberty Elevator to prosper while delivering the dependable precision services required by our partners, who include national landmarks, pharmaceutical manufacturing, historical properties, luxury retail brands, medical facilities and Fortune 500 corporations.

Partnering with Liberty Elevator instills the peace of mind that your vertical transportation is safe and efficient while your equipment and your investment are protected by an elite team of industry professionals.





Universal Technical Solutions

Using universally accessible hardware and software on all new installations and modernizations allows our clients to feel confident that they are not locked into proprietary equipment or limited-service options for the lifetime of the elevator. Whether you need an elevator installed in new construction, replace your current lift with a one-of-a-kind elevator that reflects your company brand or need to modernize the equipment room in your building, Liberty Elevator Corporation has the solution for you.

Our union certified technicians are well trained in the maintenance, modernization and repair of elevators from across the industry, allowing our team to effectively support the equipment manufactured by the large OEM's.

NOTICE

Liberty Elevator Corporation
DOOR LOCK MONITORING
DEADLINE DEC. 31, 2023

KNOW THE CODE

There was a recent update to the Florida building code that effects over 80,000 elevators across the Sunshine State. The American Society of Mechanical Engineers (ASME) code A17.3 refers to elevator standards & compliance, including provision 3.10.12 that states: **'An elevator car will not move while the cab doors are open.'** The Elevator Safety Code is implemented by Florida's Department of Business and Professional Regulations and it requires that owners of existing elevators 'must be in compliance with part 3.10.12 of ASME A17.3-2015. Safety Code for Existing Elevators and Escalators by December 31, 2023.'

CODE COMPLIANCE

Compliance with this code will require the review of your elevator system by a licensed elevator contractor. While some elevators will only require a software upgrade, due to the age and condition of your system, you may need an additional hardware upgrade. The modernization could include modifying your existing elevator wiring, adding a separate Door Lock Monitor control box, or may require a complete modernization of your elevator.

INSTALLATION EXPERTS

The DLM upgrade is **NOT** required to be performed by your existing service provider or the original manufacturer of your elevator. Your current provider may not be compelled to give you the best pricing and they may not have the resources or experience to perform this complicated upgrade in a safe and timely manner. Liberty Elevator has performed countless DLM upgrades in NYC, bringing our expertise in providing quality modernizations, reliable maintenance and universally sourced hardware to address your Florida code compliance requirements.

LIBERTY LEGACY

Liberty Elevator Corporation provides timely elevator repair and predictable maintenance programs for Florida's commercial, retail, and residential buildings. We understand that each property has individual elevator needs & we offer a variety of flexible programs to meet your unique requirements, providing you **The Freedom to Choose.**

PROPRIETARY & OEM SUPPORT

Our service technicians are well trained in the maintenance and modernization of elevators from across the industry and can effectively support equipment manufactured by the following:

• Otis	• MCE
• Schindler	• GAL
• Thyssen Krupp	• ESI
• Dover	• Kone
• Westinghouse	

DLM Info

SCHEDULE YOUR DLM INSPECTION TODAY

Liberty Elevator Corp. 800.522.4551 www.libertyelevator.com

Hydraulic Elevator

Traction Elevator

A motor driven elevator configuration where steel cables are attached to the car while looped over a drive sheave to a counterweight. The counterweight travels opposite of the cab on a separate rail system within the same hoistway.

Advantages

- Best Suited for Mid to High-Rise Buildings
- More Energy Efficient
- Typically Smoother Ride
- Geared Elevators can reach 500 fpm. Gearless can go up to 2,000 fpm.

Disadvantages

- Higher Cost to Install
- More Moving Parts = Higher Maintenance costs
- Requires Overhead Clearance in the Hoistway

NOTICE

Liberty Elevator Corporation
WINTER STORM CHECKLIST
Elevator Protocol

STORM PREPAREDNESS

Winter storms are surely on their way, so it is best to get prepared now. Although the snow may create a fairytale landscape, high winds and dropping temps can prove to be a nightmare to your property & your elevator equipment. Not to worry - we've compiled some helpful tips to keep your elevator running smoothly throughout the chill of winter.

When the mercury starts to plummet, be sure to keep your elevator warm and dry. Include the following items in your Winter Checklist to minimize the chance of damage & to protect your property from preventable and costly elevator repairs.

ELEVATOR WINTER CHECKLIST

- **Temperature Management** - Always ensure your elevator room is between 45 and 90 degrees Fahrenheit with relative humidity not exceeding 85%. If temps & humidity get outside of this range, your elevator equipment will be more apt to malfunction or require costly repairs.
- **"Run" Hydraulic Elevators before the Rush** - If you have a busy morning traffic pattern, it's recommended to run the elevators to the middle floors and back a few times in the morning to circulate the oil. Warm oil will pass more smoothly through the piston & valves, reducing wear and improve piston performance.
- **Weather Stripping** - Should your machine room be subject to the outdoor elements, check the seals around your doors, windows and vents for wind and water entrance. Replace or repair any damaged or leaking areas before the winter freeze sets in.
- **Reinforce Windows** - If your machine room has windows, these can be blown out by strong winds. To prevent water damage, fasten sheets of plywood over the windows. This will help protect your equipment and maintain a consistent temperature in your machine room.
- **Prepare for High Water** - Park all elevators near the center of the hoist way to prevent potential water damage from accumulation in the pit during rains & winter thaw. If the cab or travel cables become damp or submerged in water, they will require extensive & costly repairs.
- **Select Good Entrance Mats** - Preventing rock salt & sidewalk deicers from being tracked into your building will help prevent slip hazards & may also reduce premature wear of your elevator's door sills and equipment. "An ounce of prevention is worth a pound of cure."

PROACTIVE EQUIPMENT UPGRADES

There is still time to get your elevator equipment upgraded before winter causes havoc around your building. These three options can greatly impact your guests' experience when the temperatures drop.

- **Tank Heater** - Maintain the oil temperature in the reservoir of hydraulic elevators.
- **Hydraulic Battery** - Reduces the risk of an entrapment in the event of a power outage.
- **Electronic Control Valves** - Provide optimal ride quality regardless of temperatures.

Following these safety tips will help keep your building, employees and elevators safe from winter's bite. To inquire about upgrades, schedule an inspection or request additional maintenance before winter sets in, please contact Liberty Elevator today.

Contact Us

PREVENTATIVE MEASURE FOR A HEALTHY ELEVATOR

Liberty Elevator Corp. 800.522.4551 www.libertyelevator.com

Communication & Education

Liberty Elevator Corporation is your trusted partner when it comes to the safety, compliance and efficiency of your vertical transportation.

We believe in educating your team on the industry's best practices and to keep you aware of any pending code updates that may require compliance by a specific deadline. This allows for ample time to address your vertical transportation system holistically, proactively building out a proper budget and timeline that fits your business and your building's tenants.

Liberty is always available as a reliable 'wingman' who places your property and your guests' safety as a paramount importance.

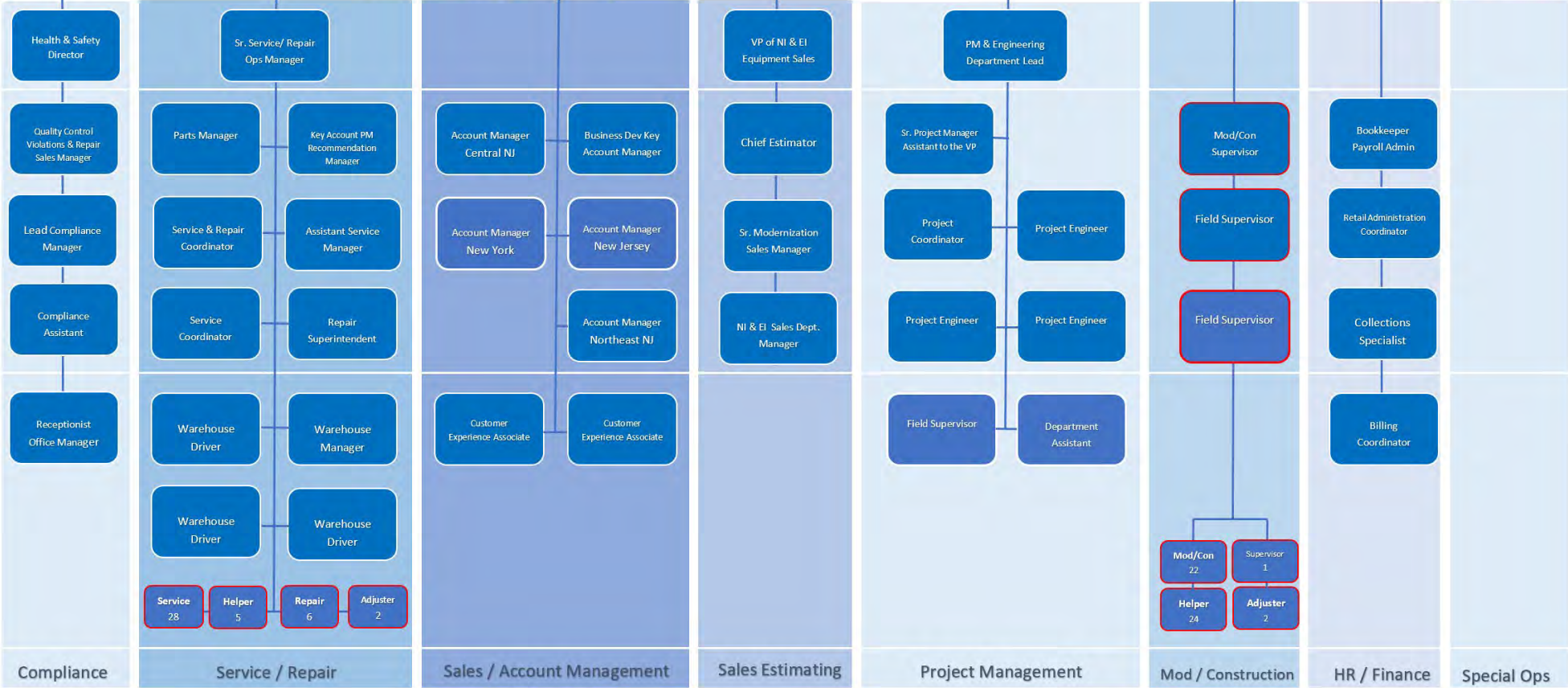


Driving Workplace Safety

Maintaining a safety record that exceeds industry standards doesn't happen by accident. The safety of our customers, passengers and employees is our primary objective.

All of our highly qualified service technicians are graduates of the National Elevator Industry Education Program (NEIEP) and are I.U.E.C. Local 1, Local 5, Local 71 or Local 74 certified mechanics.

Liberty hosts routine training sessions to keep our high safety standards within reach. Course subject matter includes: **Lock Out – Tag Out + Mechanical Stored Energy Jumpers + Barricading + Rigging & Hoisting Fall Protection False Cars & Running + Platforms Car Top & Pit Access + Live Electrical + Personal Protection Equipment**





Douglas Muttart
President



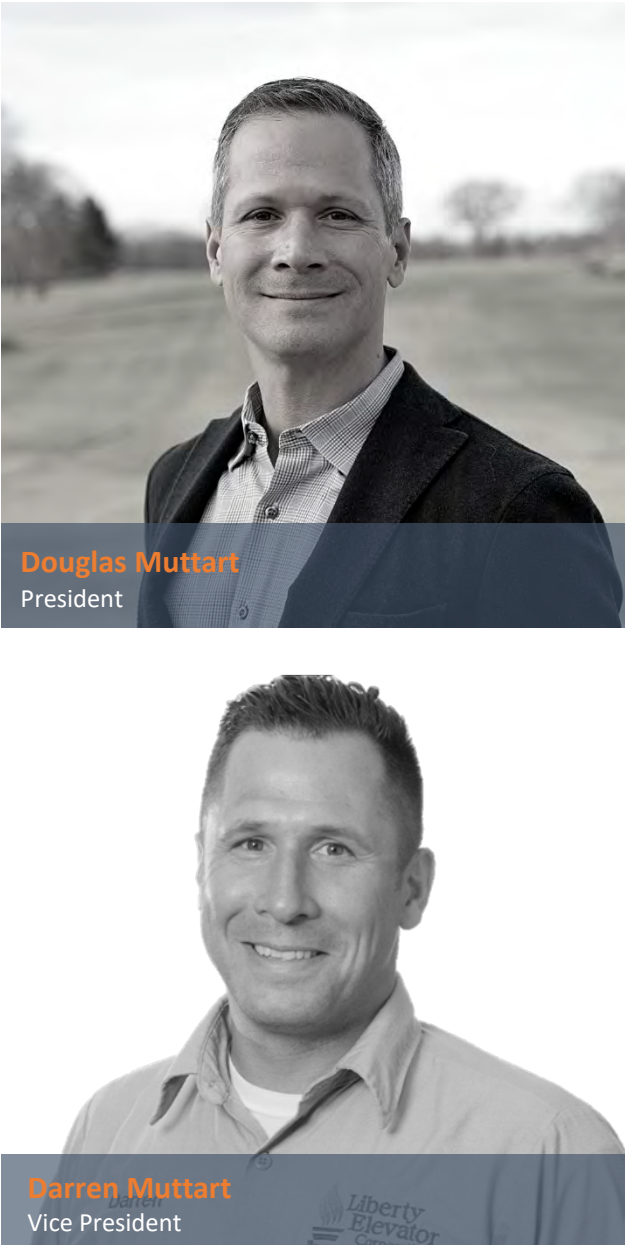
Lauren Clausman
General Manager



Mohammad Ahmed
PM & Engineering Dept Lead



John Miller
VP of Sales & Account Management



Darren Muttart
Vice President



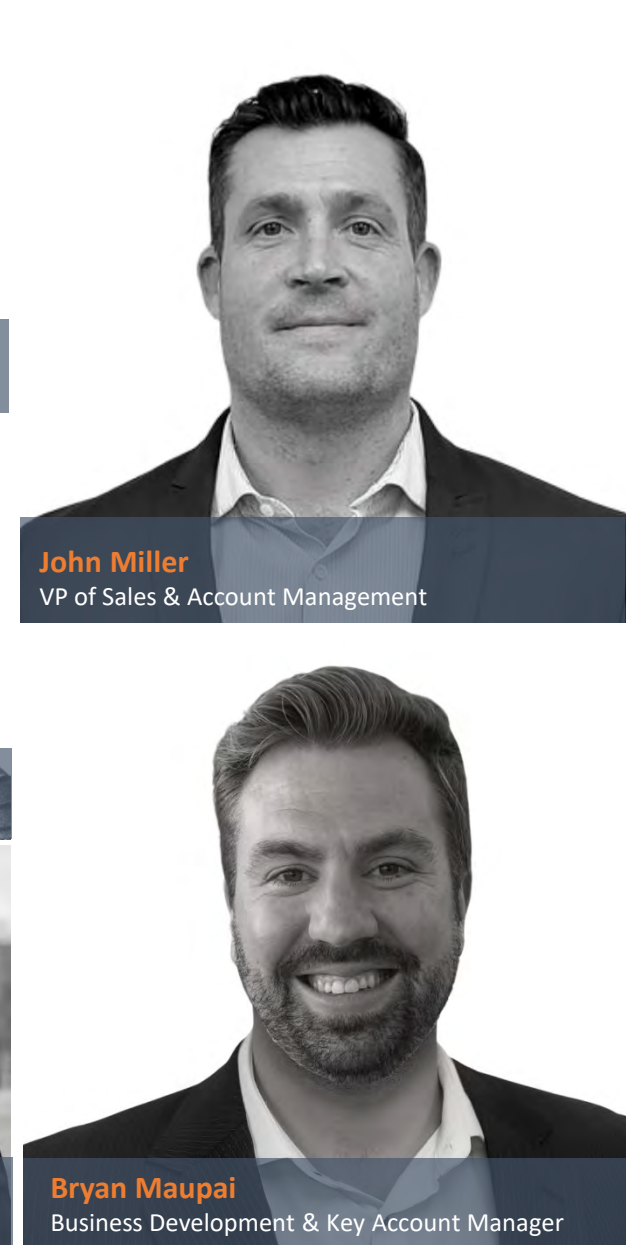
Erika Van Anglen
Assistant Secretary Treasurer



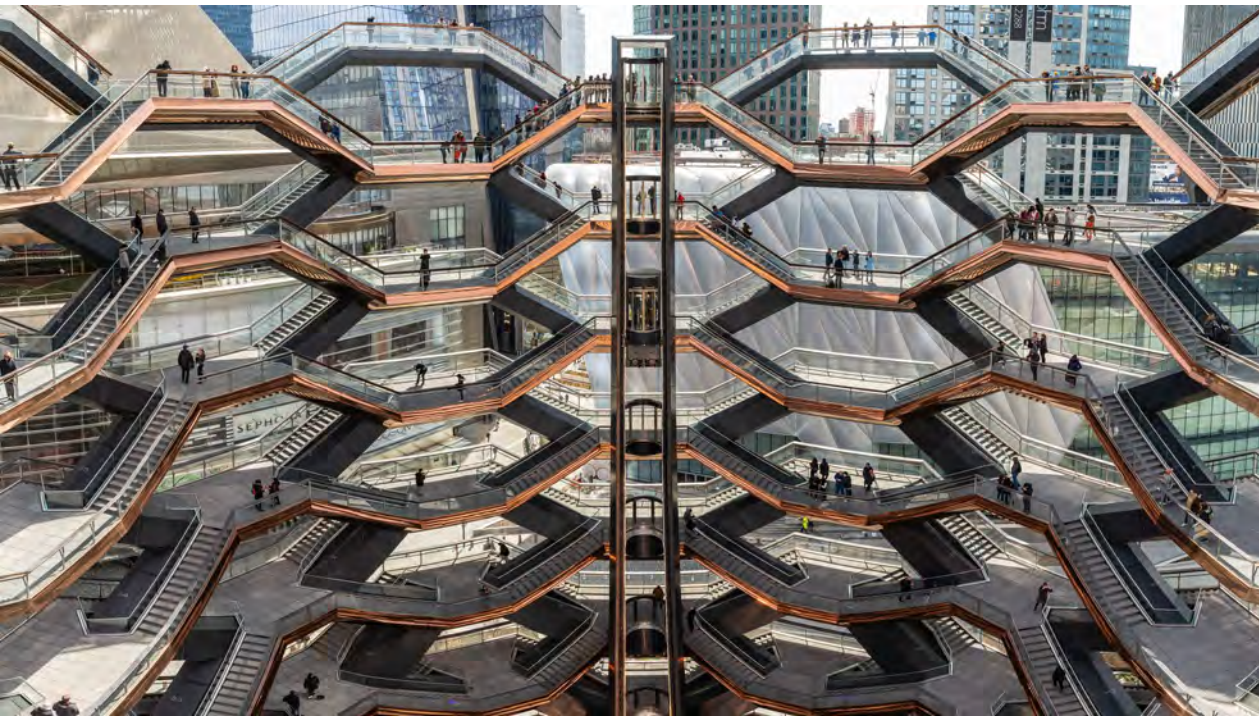
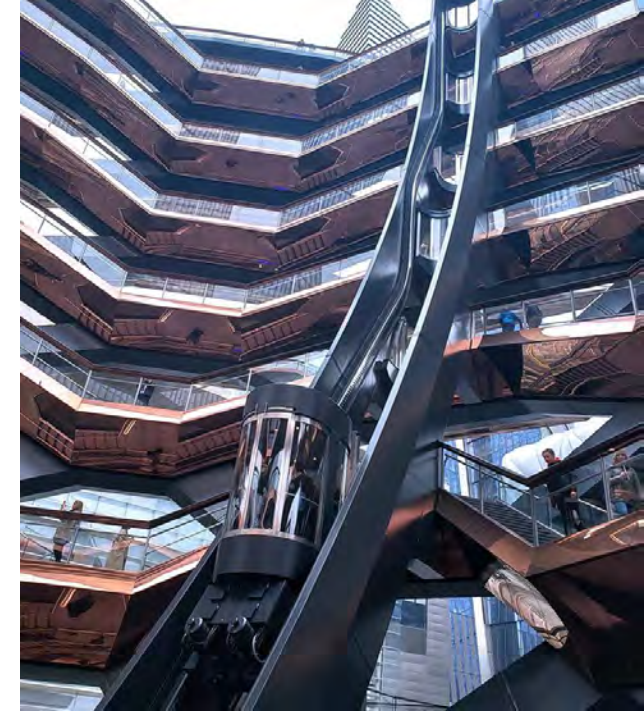
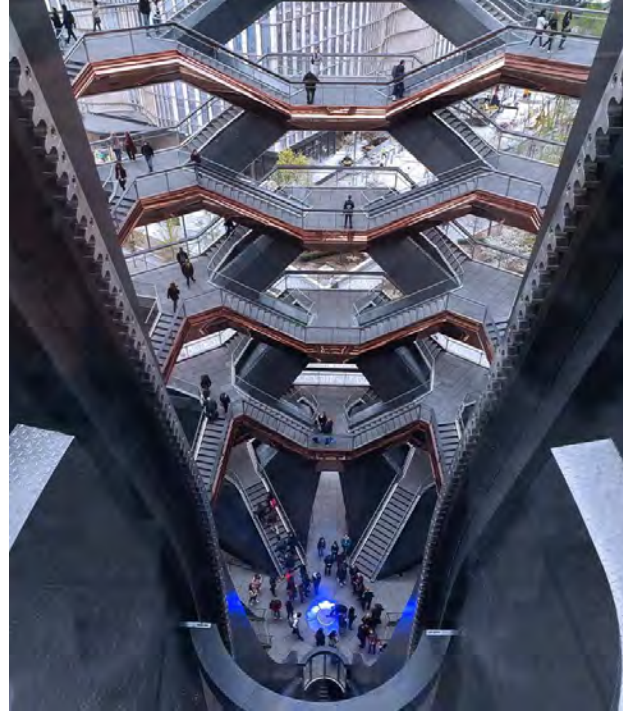
Rida Cekic
NI & EI Dept Manager



Bryan Zupkus
SR Service Operations Manager

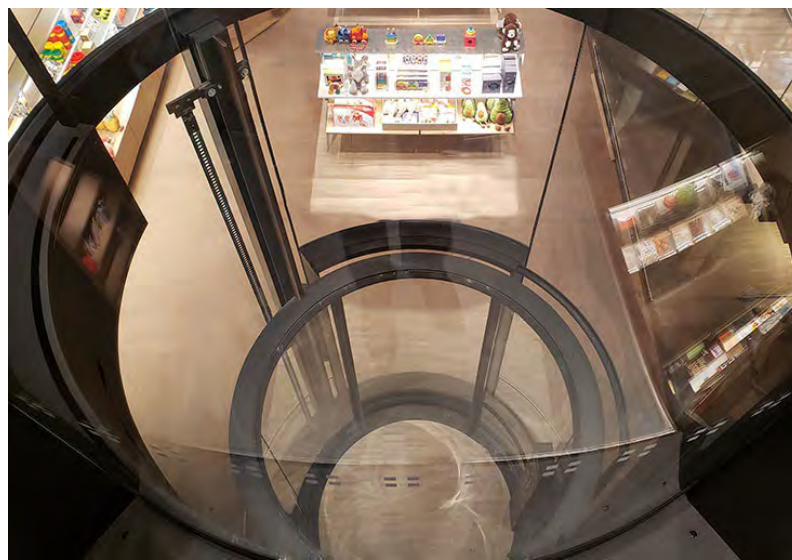


Bryan Maupai
Business Development & Key Account Manager



Vessel – Hudson Yards Award-Winning Innovation

The Vessel is the extraordinary centerpiece of Hudson Yards that was designed by London's Heatherwick Studios as an interactive artwork to be experienced through its multitude of perspectives outwardly & within. The Vessel is a geometric latticework of copper-colored steel and concrete comprised of 154 interconnecting stairways, 80 landings and nearly 2500 stairs. Climbing the 7 stories may prove difficult for many visitors, so Related Companies and Heatherwick Studios reached out to Liberty Elevator Corporation to install and maintain an elevator to seamlessly fit within the open structure's artistic aesthetic while complying with New York's strict ADA requirements.



Museum of Modern Art Round Glass Artwork

Liberty Elevator Corporation installed this one-of-kind, round glass elevator in the museum as a true piece of art in motion. The custom elevator has a glass cab that surrounds you as you transcend from the mezzanine to the lower-level bookstore, giving a floating feeling as the transparent cylinder smoothly transports you between floors.

All mechanical aspects of the elevator are hidden underneath the cab floor, including door operators, giving a minimalistic appearance while maintaining its ultra-modern & cutting-edge technology in a shroud below. The round glass doors & clear glass ceiling allow for uninterrupted views of the lobby and gift shop.

Liberty Island Museum

National Landmark

In the fall of 2016, the next step in Lady Liberty's great legacy was announced—the construction of the brand-new Statue of Liberty Museum. When this new museum opened, it was the most monumental addition to Liberty Island since the Statue herself. More than that, it allows millions more visitors to enjoy the Statue of Liberty experience and be inspired by her history and message of freedom and opportunity.

The glass elevator lifts you from the new museum to an exterior vantage point that allows amazing views of the Statue of Liberty and of New York City across the harbor.





55 Hudson Yards – Illuminating Design

During the day, sunlight shines throughout the entire elevator shaft, penetrating the cab through its clear glass ceiling and transparent glass walls while giving off an illuminating glow in the lobby deep within the building. During the evening, the translucent effect of the glass elevator shaft transforms, illuminating internal office space thanks to recessed LED lighting in the cab's floor & ceiling. This glass elevator is a key component to the energy efficiency of this property while allowing natural light to alleviate the demands on power consumption.





Coach Flagship Classic Elements & Glass

This iconic fashion brand moved their flagship store to 5th Avenue in Manhattan and challenged Liberty Elevator to develop a lift that captures their unique international style.

With a call for a craftsman flair, the elevator was required to incorporate the hand tooling style of the brands' iconic aesthetic. From a glass and wood cab with a branded mosaic tile floor to the metal lattice work on the exterior of the elevator shaft, Liberty Elevator Coached the client into a truly seamless showroom centerpiece.

This High-End retail brand was looking to take their customers shopping experience to the next level and Liberty Elevator Corporation delivered on time and on budget.



850 Third Ave Brooklyn Industrial

Located between Gowanus Bay & Greenwood Heights in the Liberty View Industrial Complex, this major renovation of the eight story LEED Certified Industrial loft building included 1.2 million square feet and three beautiful, new lobby entrances. Liberty Elevator Corporation installed or renovated all 21 commercial & freight elevators on this 1920's property, showcasing the main entrance with twin glass hoist way lifts that access the first two retail floors.



The Freedom To Choose

Established in 1960, Liberty Elevator is one of the largest independently owned and operated elevator companies on the East Coast. Specializing in custom elevator installations, preventative maintenance and elevator modernizations, Liberty has grown its service reach to include New York, New Jersey, Pennsylvania & South Florida.

Liberty's award-winning team has been recognized as the **Best Family-Owned Business** in the elevator industry as well as Three-time **Project Of The Year** award winner. Liberty Elevator has earned its reputation for reliability and excellence through three generations, delivering next level service and exceeding the expectations of what an elevator experience can be.

Corporate Headquarters

63 East 24th Street
Paterson, NJ 07462

Florida Office

2000 N Dixie Highway
Hollywood, FL 33020

New York Office

42 Broadway, 18th Floor
New York, NY 10004

