



**ELECTRICWORKS**  
Liberty Elevating America's Heartland

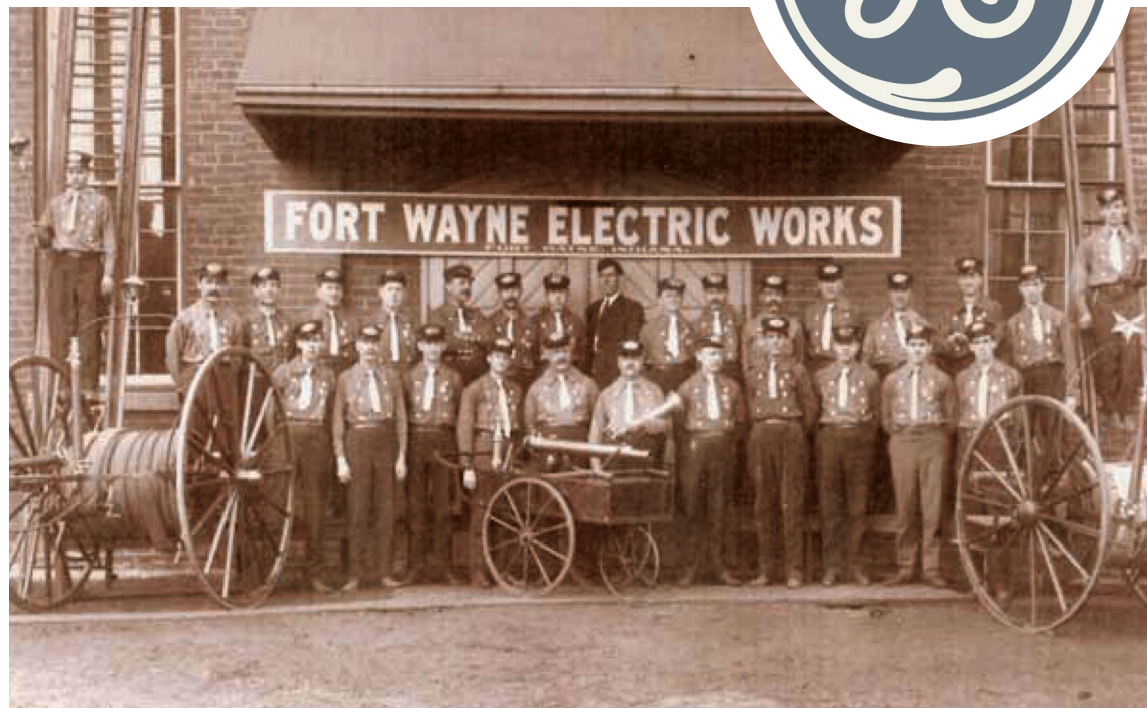
# Electric Works Fort Wayne Indiana

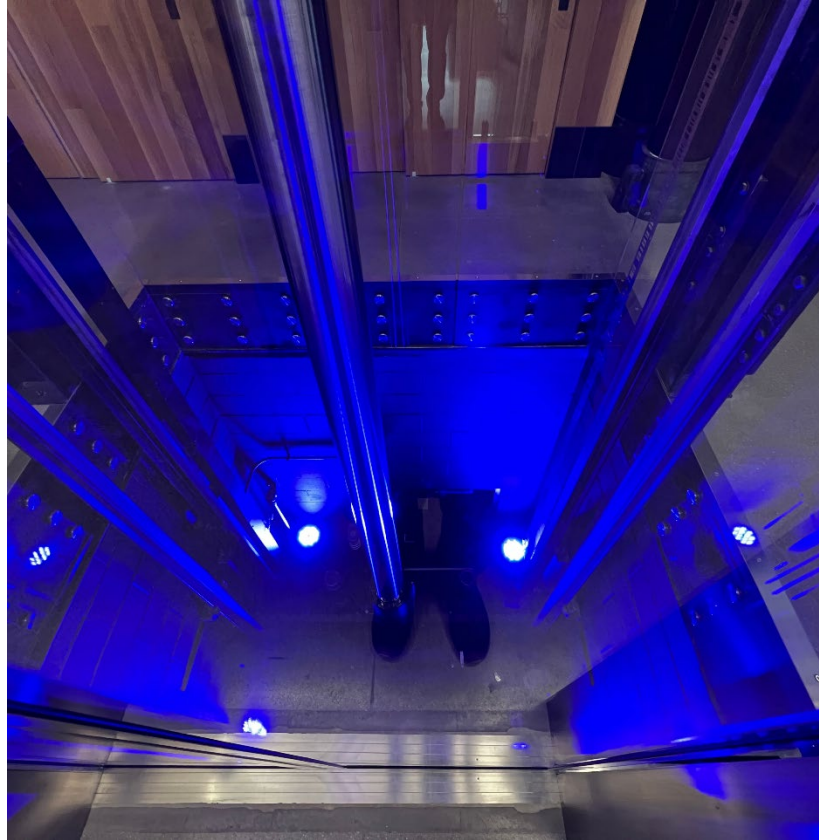
## Liberty Elevating America's Heartland

Fort Wayne, Indiana, is experiencing a surge of renewed energy thanks to the transformation of a historic industrial landmark – the former General Electric (GE) plant. Reborn as Electric Works, this mixed-use district is poised to become a vibrant hub for innovation, commerce, and community.

## A Legacy of Innovation

Electric Works' story stretches back over a century. In the late 1880s, the Fort Wayne Jenney Electric Light Company established its roots on the site, pioneering outdoor lighting systems. General Electric acquired the company in 1898, and for decades, the sprawling campus hummed with activity. Here, groundbreaking inventions like the first modern refrigerator and the electric garbage disposal were brought to life. During World War II, the plant played a vital role in the war effort as well as employing a staggering 40% of the city's workforce.





## Light As An Element

### Breathing New Life into History

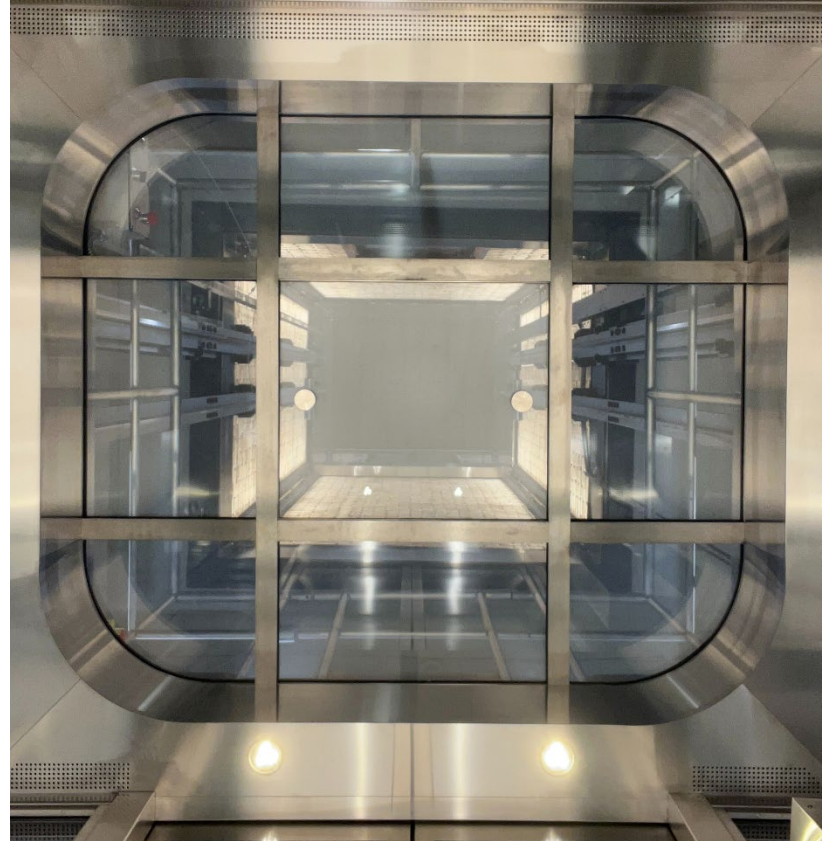
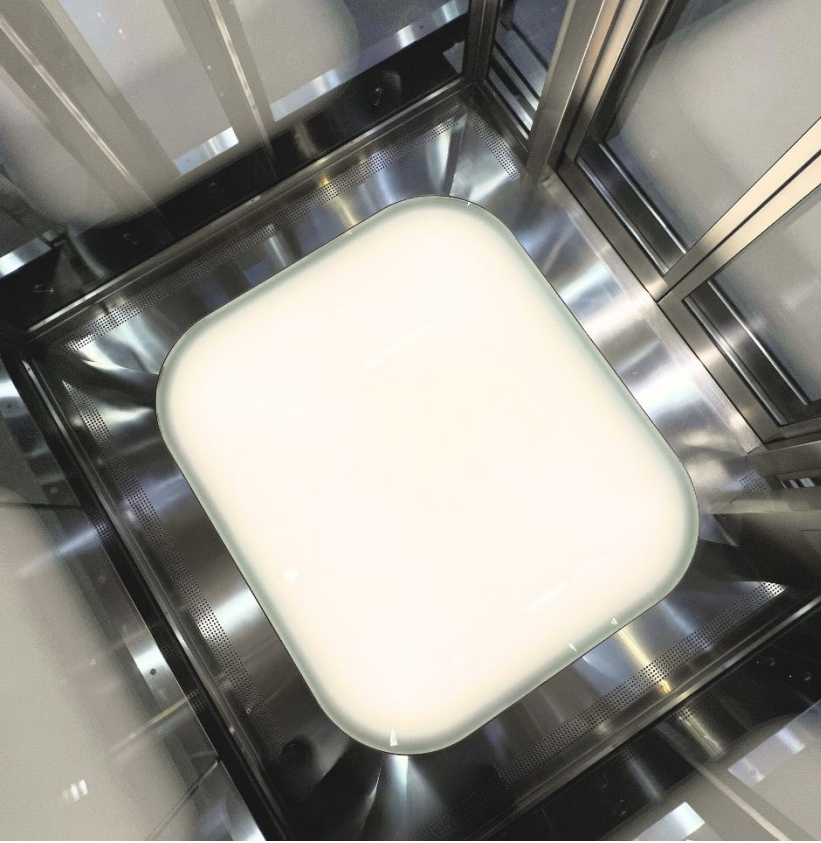
By the early 21<sup>st</sup> century, the decline of manufacturing jobs led to the closure of the GE plant in 2014. The hulking red brick structures stood dormant, a testament to a bygone era. But visionary developers saw the potential within these walls. Recognizing the rich history and dense collection of buildings, RTM Ventures, LLC acquired the property in 2017. Their vision? To transform the site into a dynamic, mixed-use district that would revitalize Fort Wayne's economy.

The redevelopment of Electric Works is a testament to the power of adaptive reuse. The project, fueled by a \$286 million investment, prioritizes the preservation of the site's historic character. Original architectural features are being meticulously restored while incorporating modern amenities and technology.



## A Community Hub Reenergized

Phase I of the project is well underway, bringing a diverse mix of uses to the West Campus. Tenants like 'Do it Best' Corp., Indiana Tech, and Indiana University are setting up shop in the innovation and research center. A community center adds a social dimension, while the highly anticipated Union Street Market promises a culinary adventure with its diverse food hall and public market. Educational facilities like a STEM high school further enhance the vibrant mix.



## Building A Brighter Future

Electric Works isn't just about physical transformation. It's about fostering a spirit of innovation and collaboration. Co-working spaces will provide a launchpad for startups, while educational institutions nurture the next generation of inventors. This fusion of entrepreneurship, education, and entertainment promises to ignite a dynamic energy that will propel Fort Wayne into the future.

The journey of Electric Works is a testament to the enduring human spirit. From its industrial roots to its innovative future, this historic site is poised to become a beacon of progress, attracting talent, businesses, and visitors to Fort Wayne. As the lights flicker on at Electric Works, a new chapter unfolds, one that promises to illuminate the city's path for generations to come.



## The Dynamic Next Chapter

Steel Dynamics (SDI), a leading U.S. steel producer, has transformed its Electric Works office space into a showcase of innovation. The company's commitment to sustainability shines through in their headquarters' design, which features recycled steel elements and a focus on energy efficiency.

A highlight of the renovation is the custom glass elevator in the lobby, supported by SDI-produced steel. This custom-designed lift features a glass enclosure, showcasing the building's traditional brickwork as well as contemporary steel elements. This unique elevator seamlessly blends modern technology with the building's historic character, creating a truly memorable experience for visitors.

SDI's hands-on approach to this project demonstrates their dedication to quality, innovation, and an investment in revitalizing their local Fort Wayne community.





# Project Details

## From Inception Through Installation

The glass elevator at Electric Works is more than just a mode of transportation; it's a captivating work of art that seamlessly blends form and function. At first glance, you'll be drawn to its sleek design, featuring clean lines, transparent glass, and stainless-steel accents. However, it's the innovative technology hidden beneath the surface that truly sets this elevator apart.

The elevator's glass cab rests on a concealed pedestal, housing all the operational equipment such as the **GAL MOVFR** door operator in the shrouded platform below. This unique design eliminates the need for traditional guide rails attached to the glass frame, allowing for a more open and spacious feel. The elevator's ascent is powered by an **ITI Hydraulik** three stage telescopic hydraulic piston, smoothly gliding along rails mounted on Steel Dynamic's own steel I-beams.

The illuminated glass shaft is a mesmerizing spectacle, casting colorful highlights on the beveled edges of the glass and stainless-steel machinery while illuminating a halo upon the ceiling and surroundings. These accents can be easily adjusted to reflect branding elements or to create a specific ambiance for events or seasonal holidays. Even the pit itself becomes a focal point with four commercial-grade stage lights that can be remotely controlled from the front desk, accentuating key elements throughout the lobby.

As you ascend in the elevator, you'll pass through the second floor, a non-accessible level featuring traditional Midwest limestone bricks and a mysterious copper door, hinting at the building's rich history.

Arriving at the third floor, you step into a modern office space shrouded by a glass landing. The frameless glass curtain offers unobstructed views of the illuminated shaft below, while stainless steel fixing bolts add a touch of timeless elegance to the overall design.

The elevator in the lobby can be both a striking centerpiece and a subtle backdrop, depending on the lighting. By adjusting the illumination, you can make it virtually disappear, allowing the space to take center stage. This adaptability ensures that the elevator remains timeless and relevant, seamlessly blending with the ever-evolving character of the building.

# Elevator Specification

New Millenium Building Systems – A Steel Dynamics Company  
1690 Broadway Bldg. 19, Ste. 160, Fort Wayne, Indiana

**Elevator Installation** by Liberty Elevator Corporation  
**Equipment Manufacturing:** Custom Cabs, ITI Hydraulik, GAL, Elevator Controls  
**Dimensions:** 76" x 66" platform, 70" x 61.5" exposed glass wall, 58" x 50" glass floor  
**Capacity:** 3000 lbs.  
**Stops:** 2 Stops  
**Speed:** 125 fpm  
**Travel:** 39'11"

**Cab Details –**  
**Cab Floor –** 1 3/4" Frosted Safety Laminated Low Iron Tempered Glass with SS#4 Frame  
**Cab Glass Walls –** 9/16" Clear Safety Laminated Low Iron Tempered Glass with SS#4 Finish Frames  
**Cab Roof –** 9/16" Clear Safety Laminated Low Iron Tempered Glass with SS#4 Finish Frame  
**Doors –** 42" x 84" automatic single speed center opening, 9/16" Clear Safety Laminated Low Iron Tempered Glass with SS#4 Perimeter Frames  
**Fixtures –** #4 Stainless Steel Finish

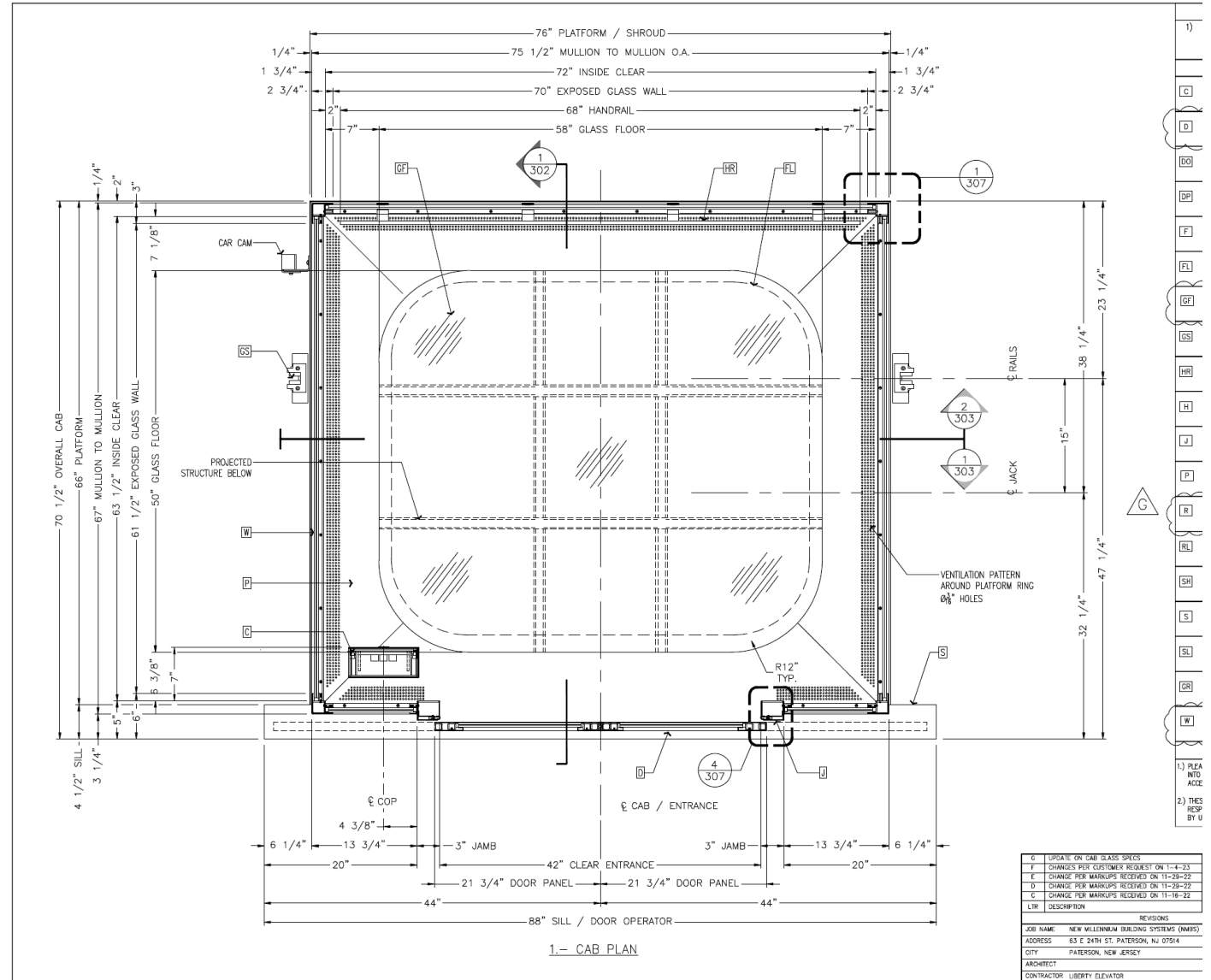
**Hydraulic Power Unit –**  
**Submersible pump:** 55 HP Motor  
**Voltage:** 460 V, 60 Hz, 3 Ph  
**Motor Current:** 86 AMPS  
**Working Pressure:** 543 PSI  
**Relief Pressure:** 679 PSI  
**Flow:** 138 GPM

**Jack –**  
**Cylinder:** 10" Diameter x 0.5" Thick  
**Plunger:** 1 – 3.5"x.250", 2 – 4.875"x.318", 3 – 6.750"x.375"

**Door Equipment –**  
**GAL –** MOVFR Door Operator

**Controller –**  
**Elevator Controls –** PIXEL HYDRO-S

**Project Credit –**  
**Building Owner –** New Millenium – A Steel Dynamics company  
**Developer –** Weigand Construction  
**Transportation-Systems Contractor –** Liberty Elevator Corporation  
**Equipment Manufacturer –** CCI  
**Consultant –** Buckley, Belcher, and Company LLC





## The Liberty Legacy Established 1960

**1960** – George Muttart begins National Elevator Co. in his Rutherford NJ basement, servicing NJ, NY & CT.

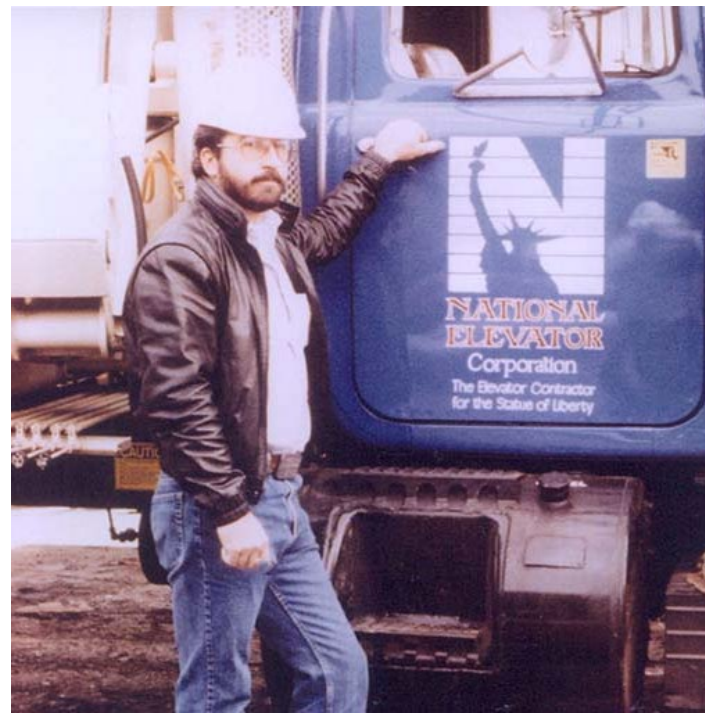
**1986** – Liberty Elevator Corporation is born during the centennial renovations of the Statue of Liberty.

**2014** – Awarded “*Elevator Project of the Year*” for elevator installation, Life & Safety upgrades at the Statue of Liberty.

**2018** – Liberty Elevator is Voted the **#1 Family-Owned-Business** in the Elevator Industry by customers & peers.

**2020** – Awarded “*Elevator Project of the Year*” for the custom elevator installation at the Vessel, Hudson Yards.

**2021** – Liberty Elevator extends its service reach to South Florida & is again voted **#1 Family-Owned-Business** in the Elevator Industry.





# The Freedom To Choose

Renowned for custom installations, Liberty Elevator has garnered three "**Project-Of-The-Year**" awards and achieved global acclaim for innovative vertical transportation solutions and distinctive glass elevators. Through collaborations with esteemed designers, celebrated artists, and iconic locations, Liberty Elevator has solidified its position as a leading family-owned enterprise since its establishment in 1960, evolving into one of the premier independent elevator service providers in North America.

Headquartered in Paterson, NJ, with additional offices in Manhattan, NY, Holmdel, NJ, and Miramar, FL, Liberty Elevator specializes in delivering dependable services such as Elevator Maintenance, Modernization, Installation, Repair, Custom Design, and Glass Elevator Installation.

## **Corporate Headquarters**

63 East 24<sup>th</sup> Street  
Paterson, NJ 07462

## **Florida Office**

11340 Interchange Circle N.  
Miramar, FL 33025

## **New York Office**

630 Ninth Ave, Suite 911  
New York, NY 10036

